

LEARNING ENVIRONMENTS

FROM KENT TO KAZAKHSTAN: RESPONDING TO THE
COMPLEXITIES OF GLOBAL LEARNING MODELS

MARIA NESDALE

GLOBAL LEADER EDUCATION



learning traditional model

0 - 25

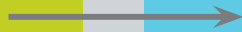
LEARN

25 - 65

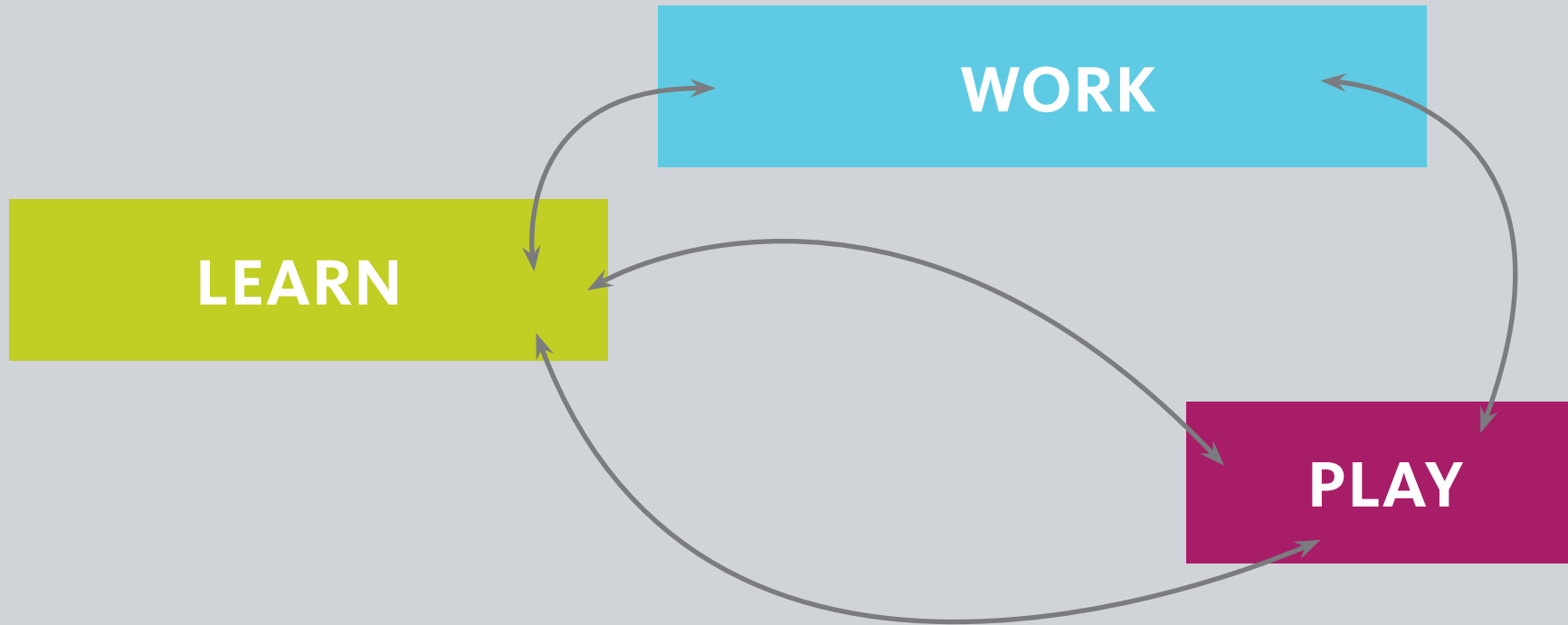
WORK

65+

PLAY



but if life is a continuum ...



...and what is work anyway?

and what is work anyway?



and what is work anyway?

47% of jobs
are at risk of
extinction by
2035. Technology at
work - Oxford University 2015



LEARNING



TO WORK

**“Non-Cognitive skills drive academic success ..but at the moment, school systems pay zero attention to this.”
Chris Gerry - The Skills Lab**

**“ Non traditional
pedagogy requires
nontraditional
learning spaces ”**
Gensler research paper

**Learning is no
Longer a
Linear process**

Learning is Lifelong and Lifewide

**“ 84% of millenials
would rather have 10
jobs that last 2 years than
one that lasted 20 ”**
2013 Survey by Protein

**“ We don't really know
what the future is going
to be like so how can we
prepare for it? ”**

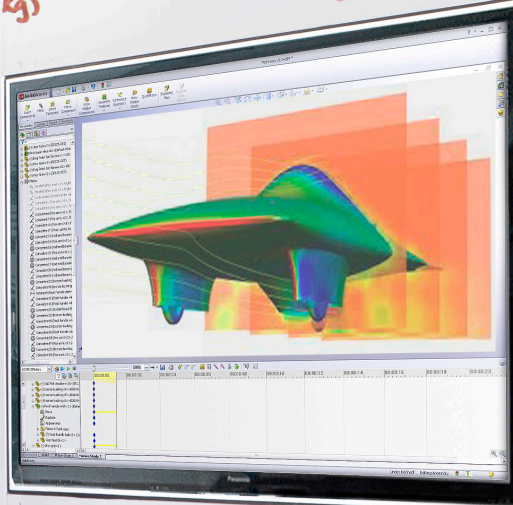
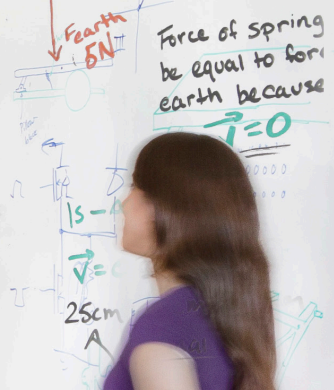


$F_{\text{Spring}} = 5\text{N}$
500g weight
 $F_{\text{Earth}} = 5\text{N}$

$$F_e = (10 \frac{\text{N}}{\text{kg}}) (.5 \text{kg})$$

$$F_e = 5\text{N}$$

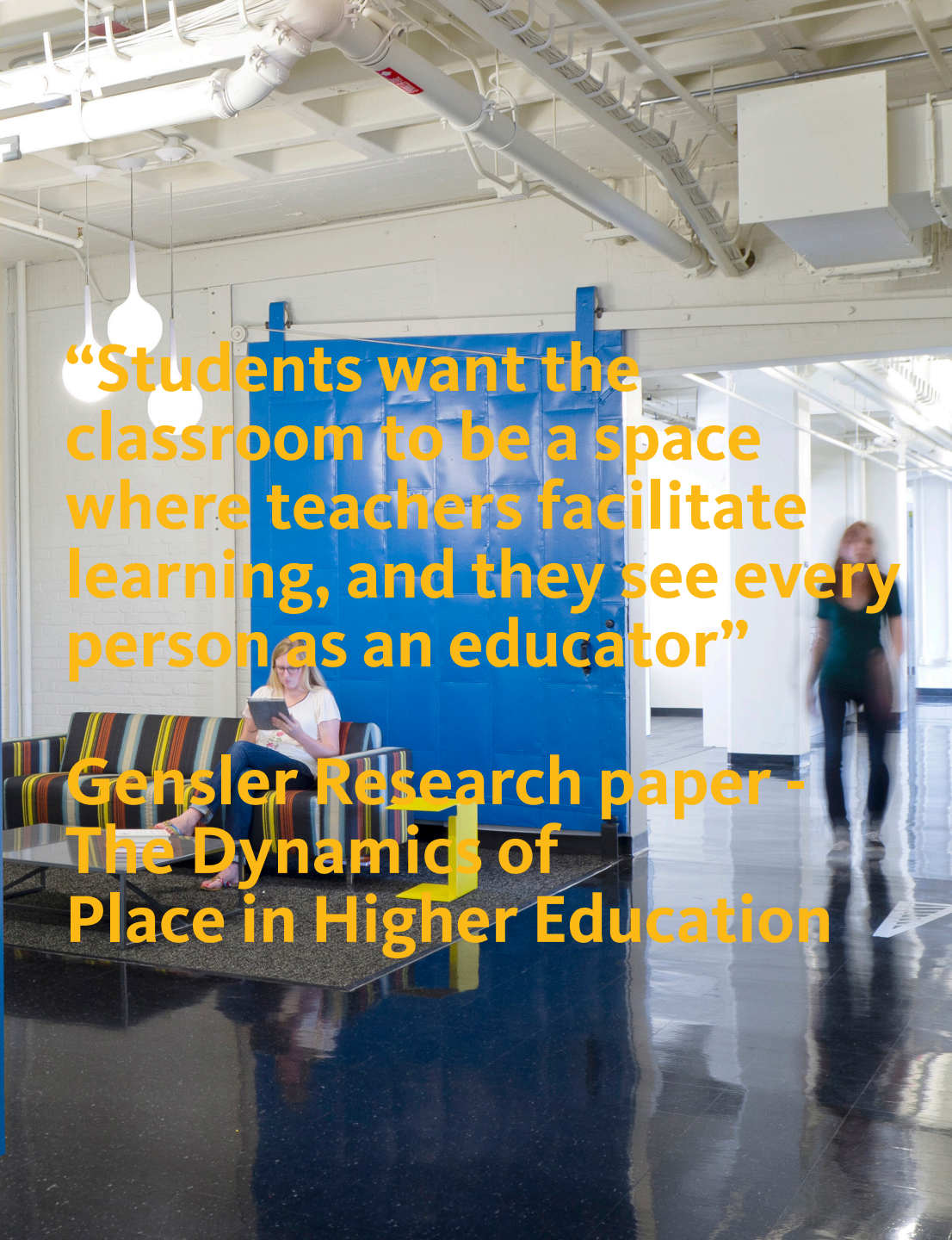
Force of spring be equal to force of earth because $\vec{F} = 0$



how it works
needs/advantage
for real, plan + partners


- IMU
- Beak
- STM32F4
- LEDs

SV reg
expansion connector
grounded mounting holes
Nylon screws



“Students want the classroom to be a space where teachers facilitate learning, and they see every person as an educator”

Gensler Research paper -
The Dynamics of
Place in Higher Education



“ Students prefer to study alone 3:1”
Gensler research paper

Dialogues with Gensler

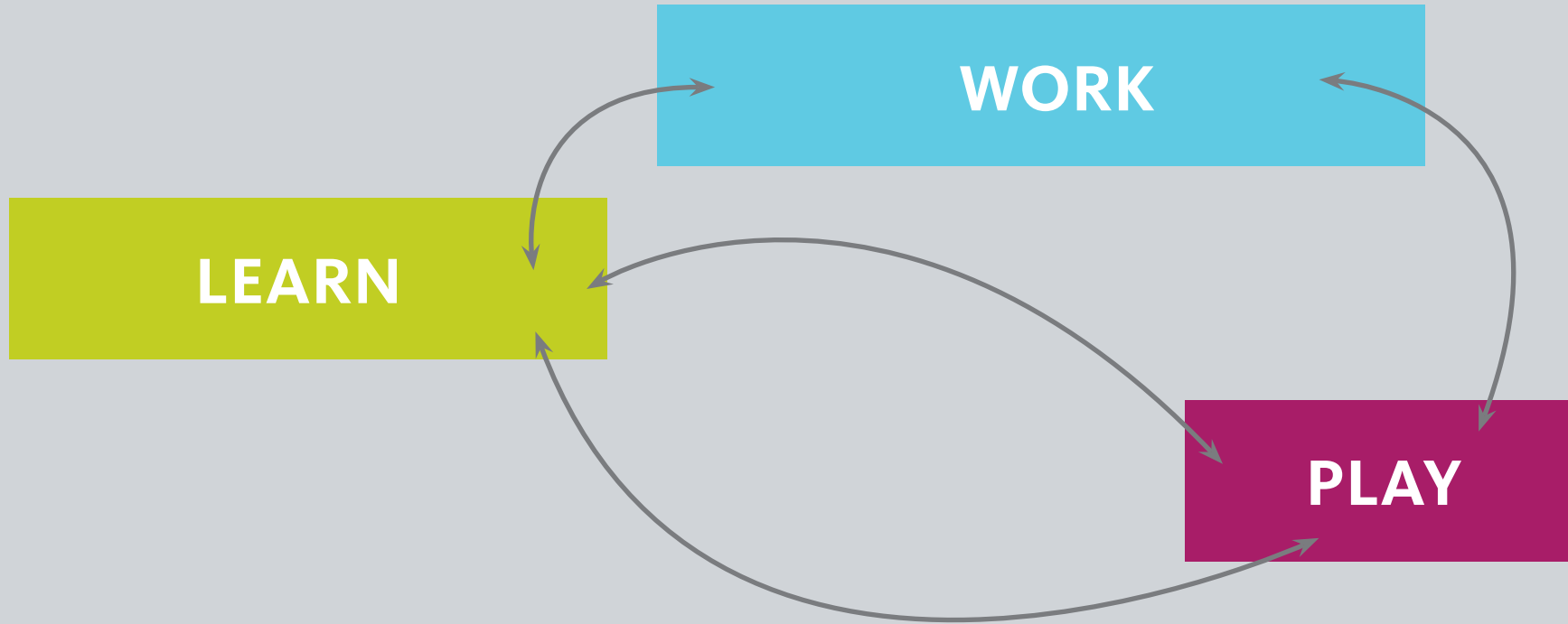
“The value of today’s academic libraries goes far beyond access to books and resources - the best libraries prioritise students’ needs for quiet and individual spaces to study.”
Gensler Research, Future of the Academic Library



“ Everything is connected anytime is a teaching moment learning happens through doing “

Gensler Research Report - ABCs of STEM

but if life is a continuum ...



How does design impact the inclusivity and personalization ?



Generates the right type of connections and interactions for cross-pollination



Provides an exciting, inspirational environment



Encourages serendipitous collaboration



Enables flexibility, yet not so flexible nobody knows what to do with it



Offers students cues for how to use the space

designing for personalisation



co-learning spaces



maker spaces



cafés



conference rooms



lab spaces



mentors



concierge services



NEW LINE LEARNING - PLAZA PROTOTYPE





GROUP ROOM

Financial notes
1. Financial
2. Group/Company
3. Reason for failure
4. My team
5. Business
6. Financial
7. Business
8. Business
9. Business
10. Business
11. Business
12. Business
13. Business
14. Business
15. Business
16. Business
17. Business
18. Business
19. Business
20. Business
21. Business
22. Business
23. Business
24. Business
25. Business
26. Business
27. Business
28. Business
29. Business
30. Business
31. Business
32. Business
33. Business
34. Business
35. Business
36. Business
37. Business
38. Business
39. Business
40. Business
41. Business
42. Business
43. Business
44. Business
45. Business
46. Business
47. Business
48. Business
49. Business
50. Business
51. Business
52. Business
53. Business
54. Business
55. Business
56. Business
57. Business
58. Business
59. Business
60. Business
61. Business
62. Business
63. Business
64. Business
65. Business
66. Business
67. Business
68. Business
69. Business
70. Business
71. Business
72. Business
73. Business
74. Business
75. Business
76. Business
77. Business
78. Business
79. Business
80. Business
81. Business
82. Business
83. Business
84. Business
85. Business
86. Business
87. Business
88. Business
89. Business
90. Business
91. Business
92. Business
93. Business
94. Business
95. Business
96. Business
97. Business
98. Business
99. Business
100. Business

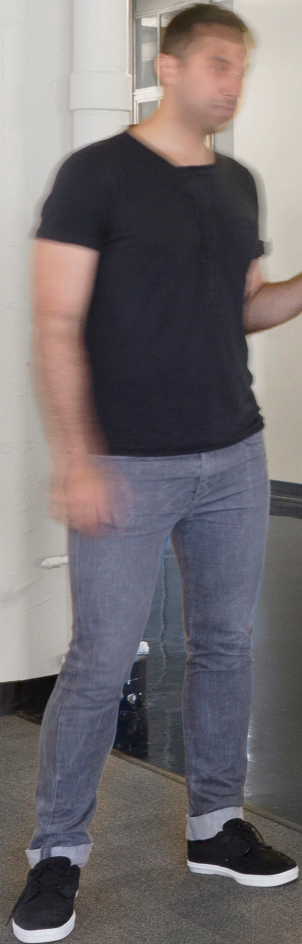


Petchey
Innovation
Centre

Knowledge
Dock

WELCOME TO THE
FETCHEY INNOVATION
CENTRE

ORIGIN
CAFE



$F_{\text{Spring}} = 5N$
 $F_{\text{Earth}} = 5N$
 $F_e = (10 \frac{N}{kg}) \cdot (.5kg)$
 $F_e = 5N$
 Force of Spring be equal to force of earth because $\vec{v} = 0$
 $15 - A$
 $\vec{v} = 0$
 $25cm$
 $r \sim hr$
 $\frac{1}{400}$

how it works - Behavior
 • needs/advantage - \$
 • correct, plan + partners.

3.5V reg
 - expansion connector
 - grounded mounting holes
 Here
 - 4x Postholes
 - Serial
 - I2C breakout boards
 - BATT
 - STM32F4 → Things
 - LEDs







University of Central Asia.
Kyrgyzstan, Tajikistan and Kazakhstan

Gensler



THANK YOU

